



*A novel way to treat
Meibomian Gland Disease*

LIGHT TREATMENTS

KARL STONECIPHER, MD

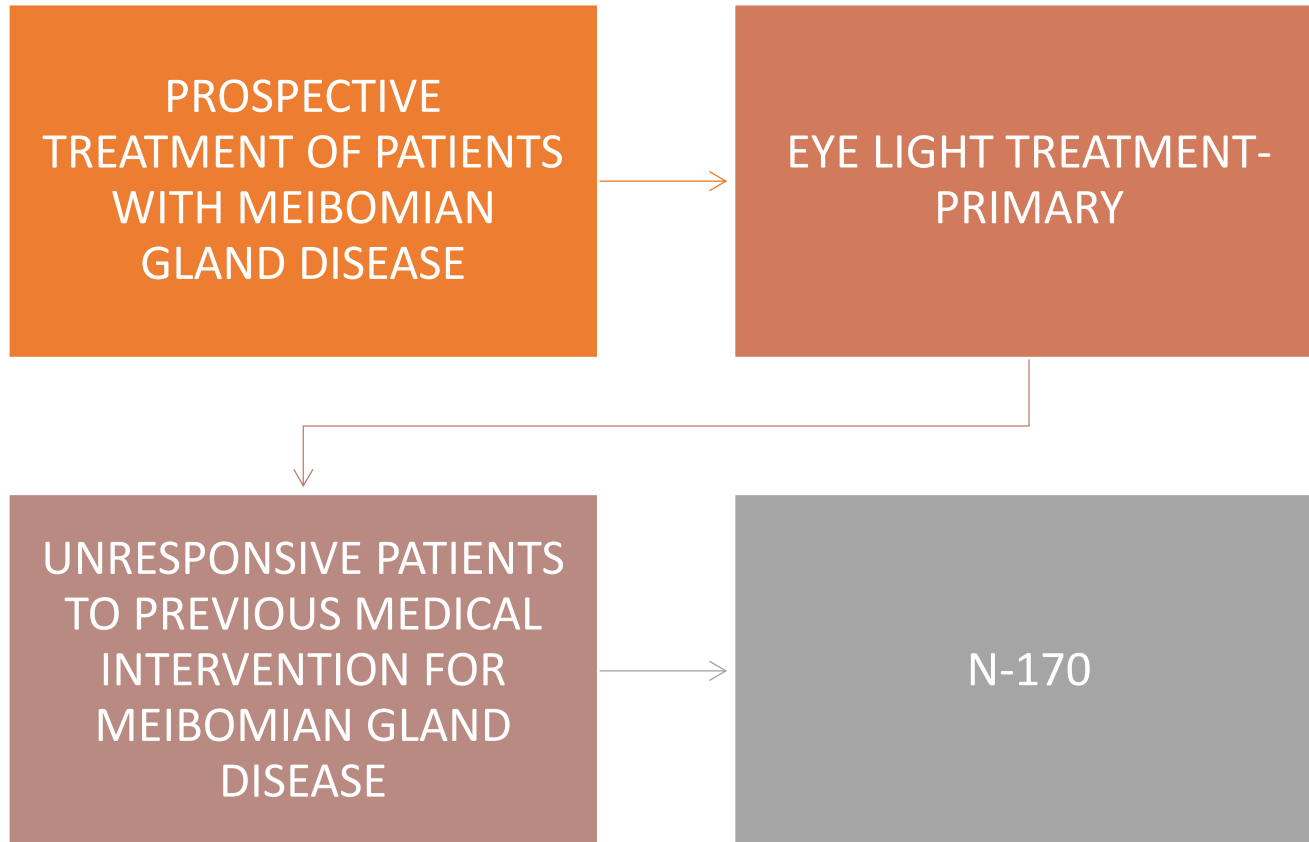
CLINICAL ASSOCIATE PROFESSOR OF OPHTHALMOLOGY,
UNC

MEDICAL DIRECTOR, TLC GREENSBORO

MEDICAL DIRECTOR, PHYSICIANS PROTOCOL

MEDICAL DIRECTOR, LASER DEFINED VISION

MEDICAL DIRECTOR, RESTORATION MED SPA

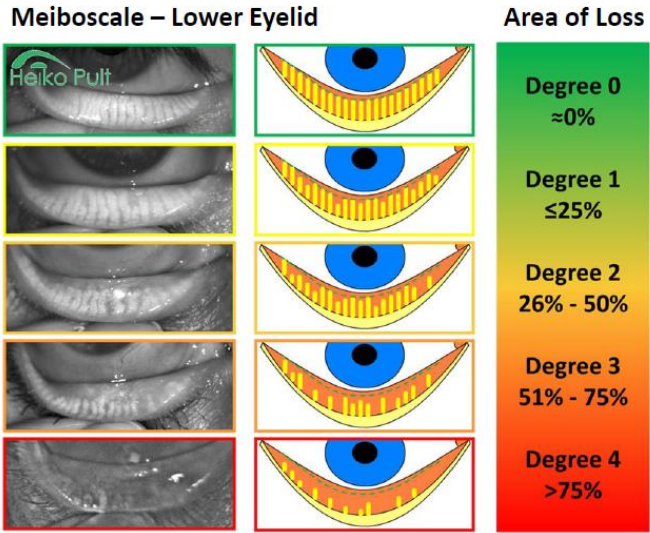


STUDY DESIGN

OUR BASIC WORK UP CONSISTS OF THE FOLLOWING



ME-CHECK SCREENING

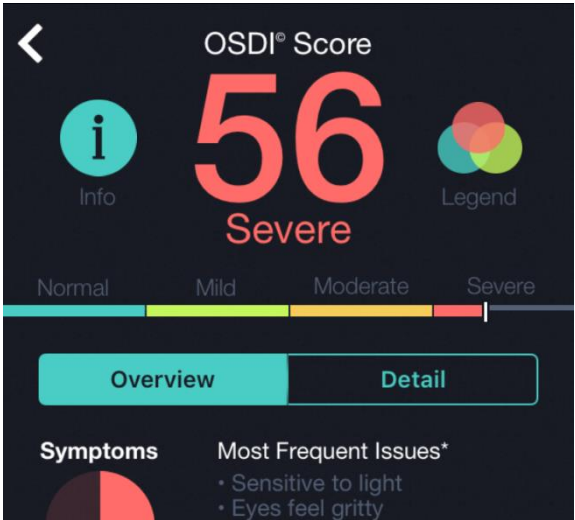


2012, 2017 © Dr. Heiko Pult – Optometry & Vision Research, Germany www.heiko-pult.de

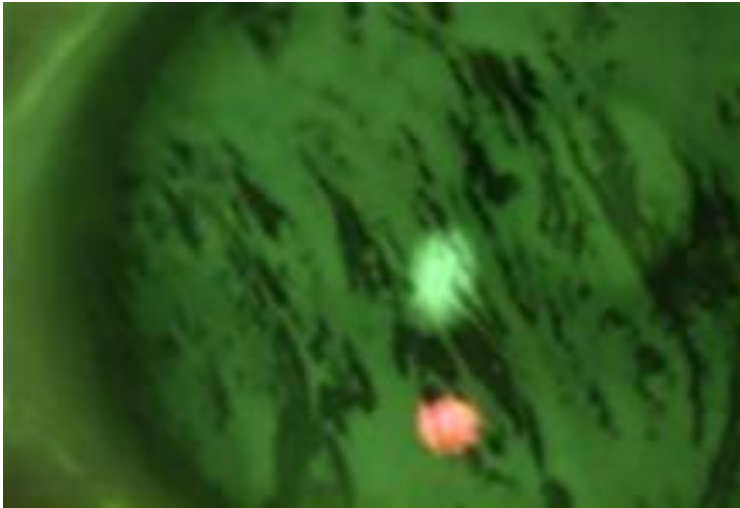
MEBOMIUM GLAND DISEASE OBJECTIVE EVALUATION



SUBJECTIVE EVALUATION-OSDI 6



TEAR BREAK UP TIME-OBJECTIVE EVALUATION SECONDS



MEIBOGRAPHY

ME-CHECK

www.eye-light.it



Meiboscale

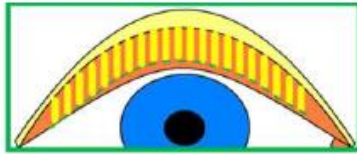
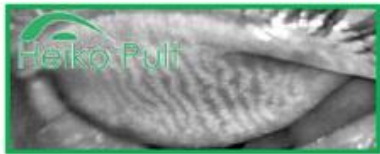
Area of Loss



Degree 3
51% - 75%

ME-CHECK PULT SCALE

Meiboscale – Upper Eyelid



Area of Loss

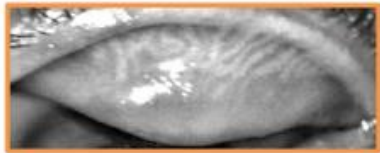
Degree 0
≈0%

Degree 1
≤25%

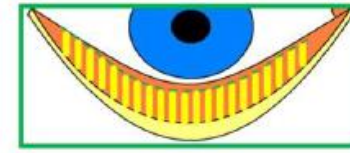
Degree 2
26% - 50%

Degree 3
51% - 75%

Degree 4
>75%



Meiboscale – Lower Eyelid



Area of Loss

Degree 0
≈0%

Degree 1
≤25%

Degree 2
26% - 50%

Degree 3
51% - 75%

Degree 4
>75%



2012, 2017 © Dr. Heiko Pult – Optometry & Vision Research, Germany

www.heiko-pult.de

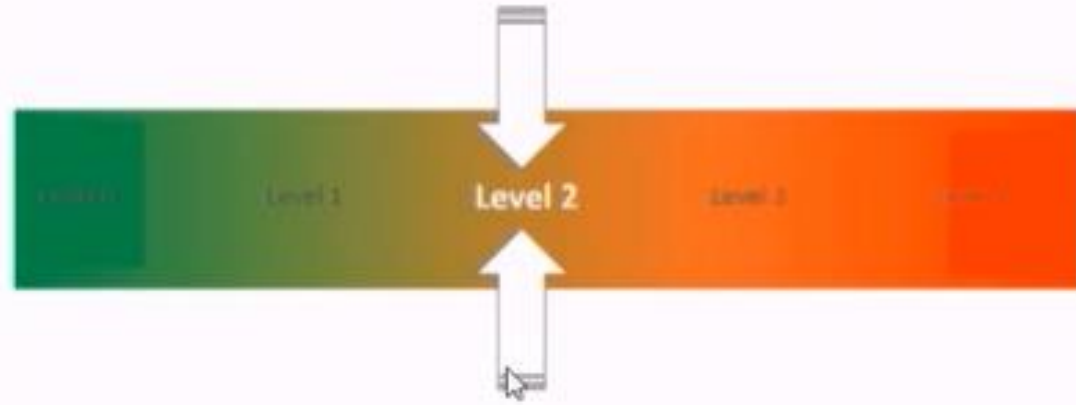
OCULAR SURFACE DISEASE INDEX (OSDI 6)

- NORMAL 0-12
- MILD 13-22
- MODERATE 23-32
- SEVERE 33-100

Pult / Wolffsohn

Screening Dry Eye

The questionnaire shows Dry Eye severity level: **2**



Severity level		Discomfort, severity and frequency
Level 0	No problem	No discomfort
Level 1	Reduced	Sporadic under stress
Level 2	Medium	Sporadic or chronic, with or without stress
Level 3	Medium - High	Severe, frequent without stress
Level 4	High	Severe and debilitating

WE CONSIDER ANYTHING LESS
THAN 7 SECONDS ABNORMAL

TEAR BREAK UP TIME
SECONDS

10/27/2015 5:42:20 PM
LipiView® Serial Number: 02055

Summary Report

Patient: TEST, TEST (9/12/1988)

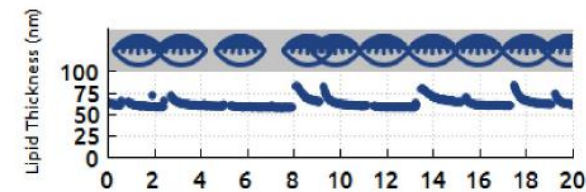
Patient ID:

OD

Average LLT 63 nm

Partial Blinks 10 / 10

C-Factor 0.95

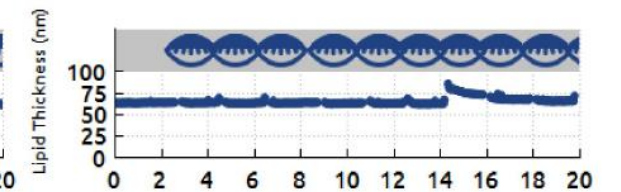


OS

Average LLT 65 nm

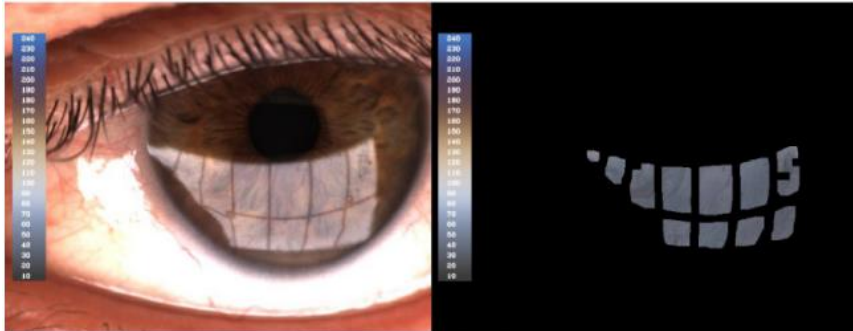
Partial Blinks 10 / 10

C-Factor 0.94

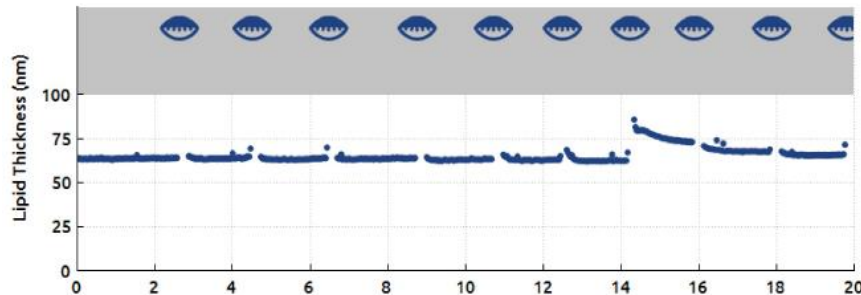


Intense Pulsed Light Therapy (OPE-Optimal Power Energy)

The interaction of OPE/IPL technology with tissue is essentially thermal, and it allows to optimize heat emission, stimulating the Meibomian glands to resume improved functionality.



Average LLT:	65 nm	Partial Blinks:	10 / 10
Maximum LLT:	86 nm @ frame 430	CFactor:	0.94
Minimum LLT:	62 nm @ frame 404	Standard Dev:	4



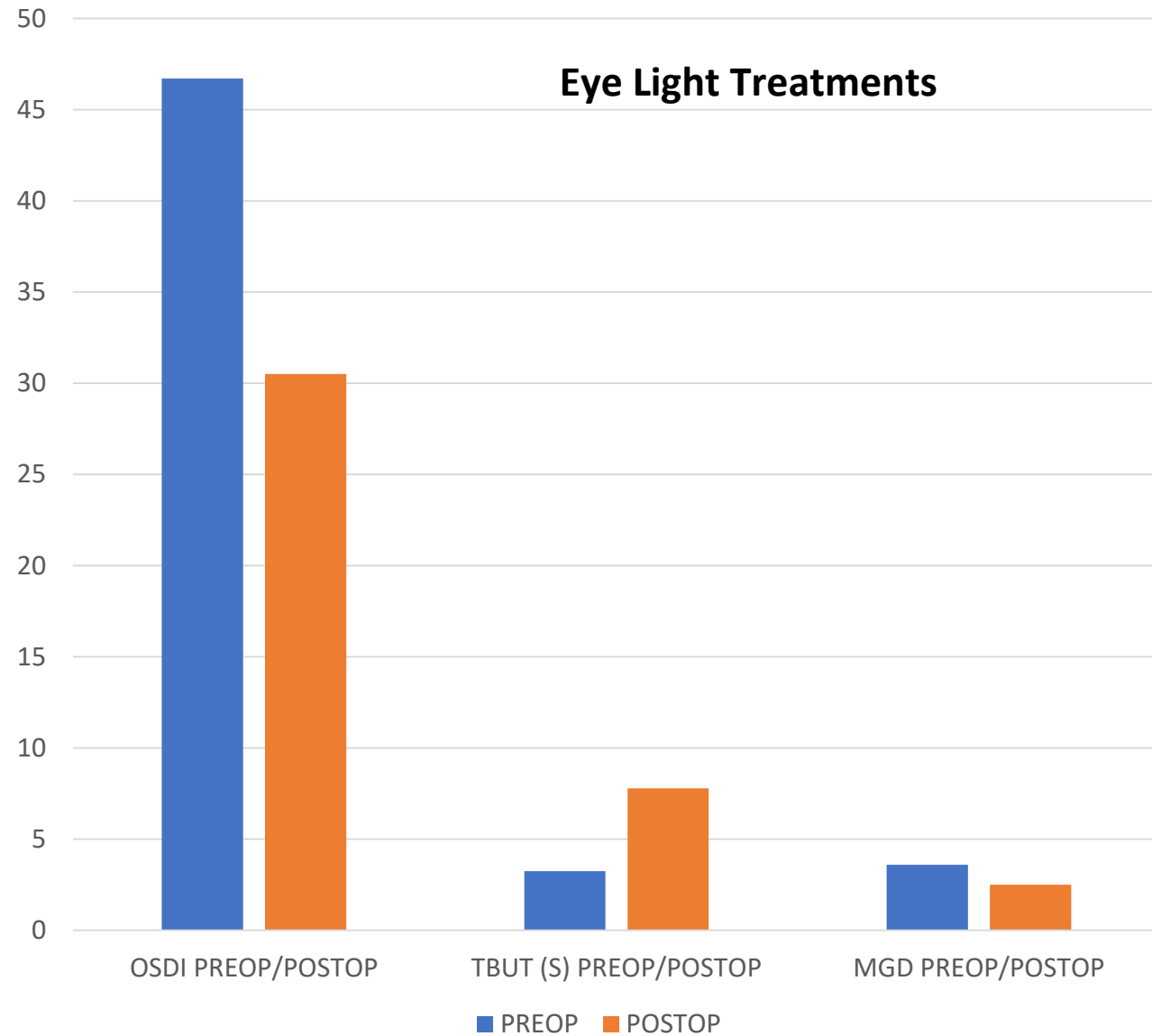
OPE® (IPL) is a polychromatic light that thanks to thermal pulses stimulates the Meibomian glands to resume normal activities. Applied to the periorbital areas and cheekbone, it stimulates contraction of the glands, increasing the lipid stream and reducing the evaporation of tears.

Low Level Light Therapy (LLLT)

LIGHT MODULATION® (LLLT) is a unique technology of photobiomodulation used for many years in various fields of medicine (dermatology, dentistry, etc.). The emission of a particular light - to a certain wavelength - triggers an endogenous heating of the eyelids. This treatment eases the spill - from the Meibomian glands - of the tear film's oily component, stabilizing the lipid layer of the tear.

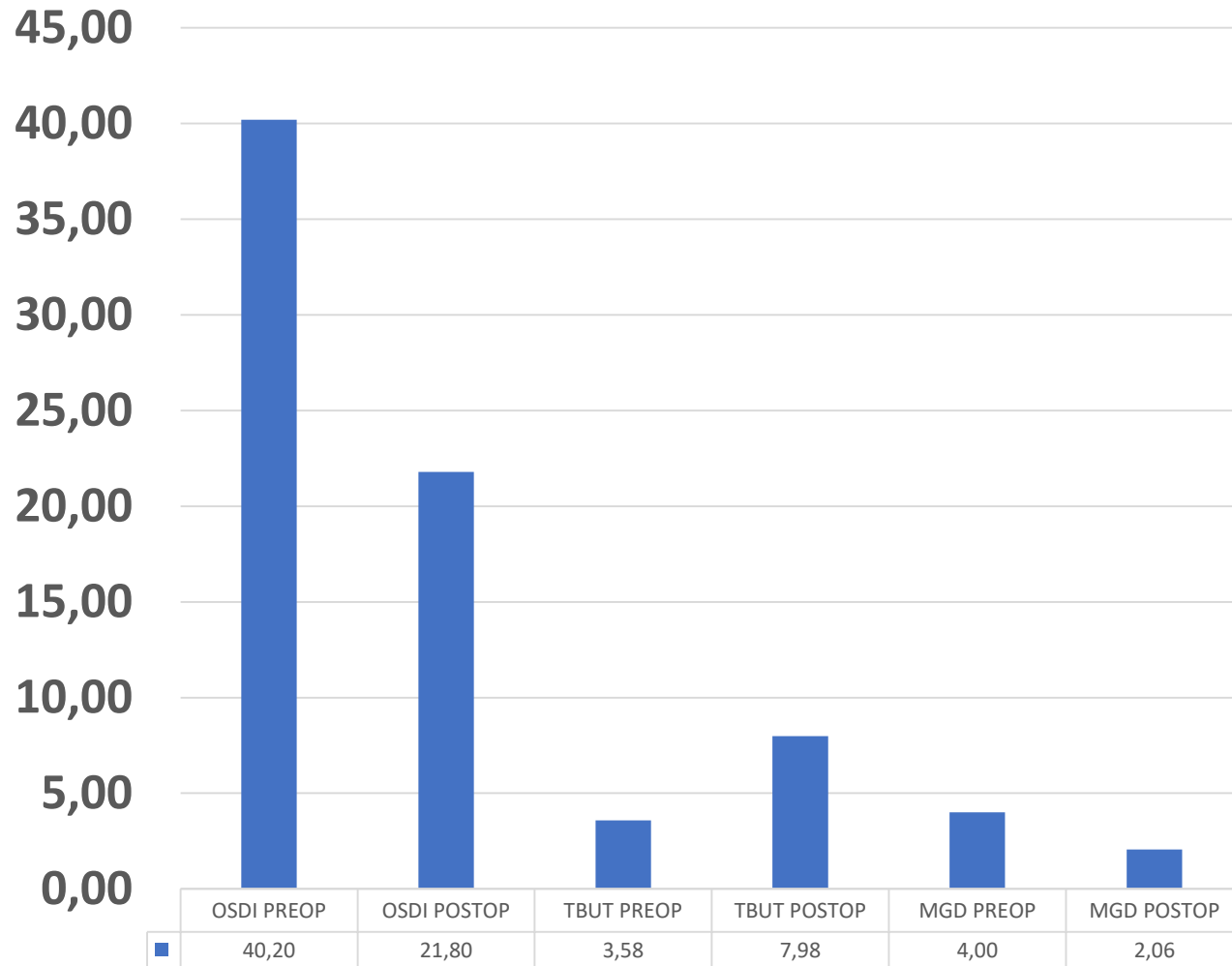
The emission of light requires a specific wavelength and a proper distance to obtain a deep impact on the treated tissue. Cells absorb light photons and transform their energy into biochemical energy producing this way the metabolic processes required to repair and regenerate cells. Light modulation is a patented photobiomodulation technology, a strong metabolic enhancer that stimulates the production of ATP (Adenosine Triphosphate) to increase cellular action and emphasize cells activities. The Light-emitting diode/LED emitting matrix trigger eyelids endogenous heat, directly stimulating the normalization of glands and supporting the thermal impact of the OPE technology.





RESULTS

N-170



RESULTS

HAPPY PATIENTS
MEAN HAPPY LIFE

GOAL

***UNSOLICITED PATIENTS NOTE THESE
ARE THE BEST THEIR EYES HAVE BEEN
IN A LONG TIME.***

